

## Sim++ 3.11 Upgrade.

### What is New?

#### XML Sim Files.

Sim files version 3.11 are stored in XML formatted files instead of the proprietary old format. This will allow the users to modify the Sim using any XML or text editors.

In addition, the user can use any off the shelf software ( WinDiff, Beyond Compare ) to compare different Sim files.

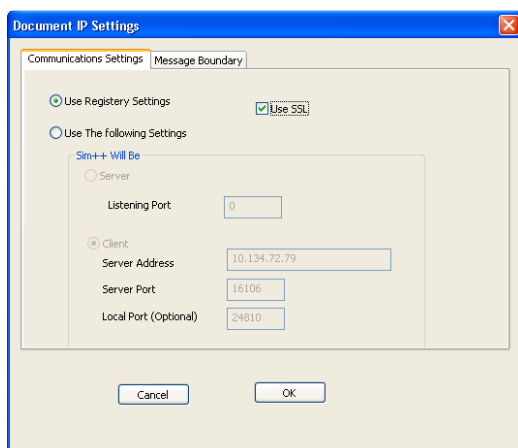
#### Built In Audits.

This feature allows non-XPNET users to create local PC audits that can be viewed by Audit Explorer.

Please see SimComm new methods ( **AuditStart**, **AuditEnd** and **AuditGetName** ).

#### SSL Capability.

Sim++ simulation stations can be SSL stations if the new Use SSL station checkbox is checked.



All communications between Sim++ client and TCROUTE are SSL encrypted.

## **DICT2Sim Utility.**

A new Tandem utility called DICT2SIM can be used to create a Sim file from a DDL dictionary. The new utility can be very useful to create a Sim files to decode database files such as LCONF, CAF, IDF, .. etc. Also it can be used to create a Sim message file if the DDL for this is message is available (like STM).

For more information about DICT2SIM please see the following link.

<https://www.simplusplus.com/Sim311Upgrade/DICT2SIM.PDF>

## How to Upgrade.

### Workstation Upgrade.

To upgrade the workstation, please follow these steps :-

1. Backup all the Sim files. The new version will save them in the new XML format. You will need to have a copy in case you need to back out the upgrade.
2. Visit Sim++ upgrade page <https://www.simplusplus.com/Sim311Upgrade/>
3. Download the Auto Install program to your PC.
4. Run the InstallSimpp.30.11.EXE.
5. Follow the steps on the screens and uncheck the Sim files options so your Sim will not be replaced.

### Tandem Upgrade.

Here are some notes about the Tandem upgrade:-

- The Simpp satellite process was not changed and the old one can still be used.
- The User library was not changed and the old one can still be used.

To upgrade TCPROUTE, please follow the steps:-

1. Visit Sim++ upgrade page <https://www.simplusplus.com/Sim311Upgrade/>
2. Download Tandem Objects zip file.
3. Upload TCPROUTE.700 to your S series system or TCPROUTE.800 to your Blades systems, **using Binary mode.**
4. FUP ALTER the uploaded TCPROUTE object file code to 700 or 800 depending on your system.
5. Modify the obey file that starts TCPROUTE to use the new object. The following is a sample to start the TCPROUTE.

```
RUN TCPROUTE / NAME $TCPRT, TERM $SUDO, PRI 50, LIB USERLIB, NOWAIT / &  
ZTCP-PROCESS $ZTC1 PORT-NUM 5001 ALLOWED-USERS ALL
```

Please note :- The home terminal for the TCPROUTE process must be a permanent terminal, like \$SUDO or VHS, you can not use the same terminal as your running TACL.